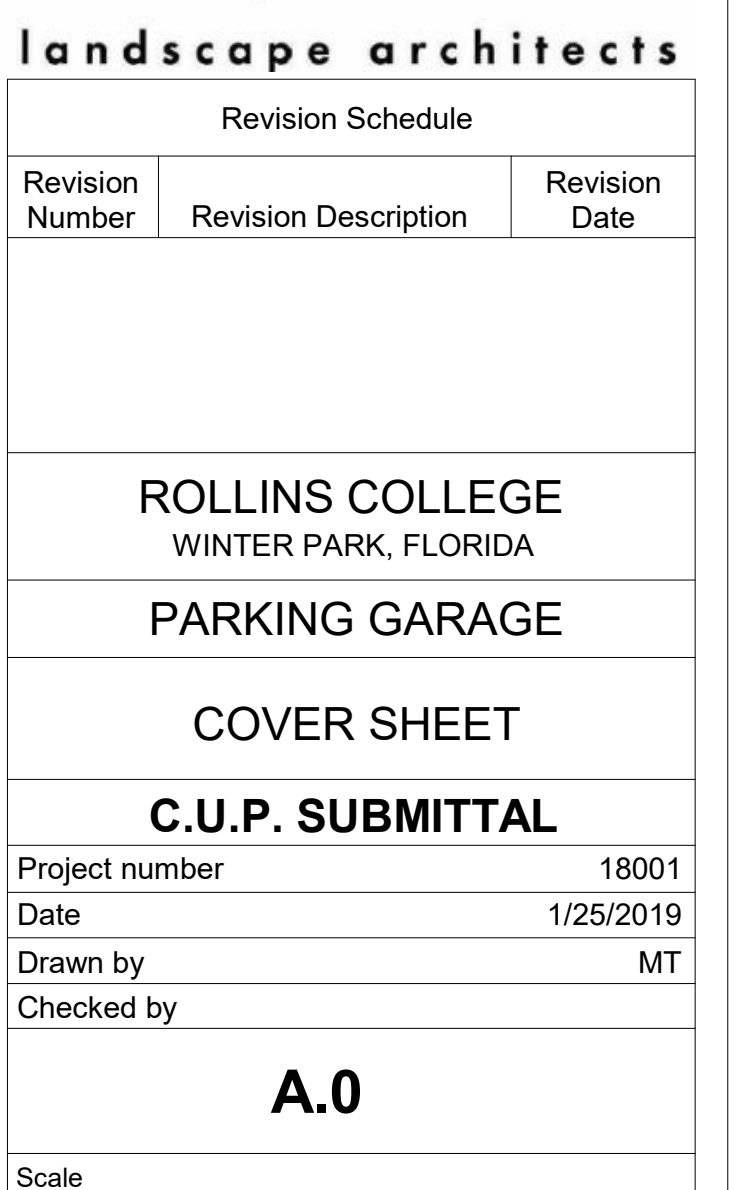


Revised 1-25-2019





CORES LAB
STRUCTURES
(TAMPA) INC.

ROB SCHAEFFER, AIA LIC. #AR99177

RS
ROB SCHAEFFER
VISUALIZATION
AND PLANNING
407.288.7309
rob@rsvp.com
www.rsvp.com
100 W. MONROE BLVD. STE. 105
WINTER PARK, FLORIDA 32789

POULOS & BENNETT


CRJA **IBI**
landscape architects

| Revision Schedule | | |
|---|----------------------|---------------|
| Revision Number | Revision Description | Revision Date |
| ROLLINS COLLEGE WINTER PARK, FLORIDA PARKING GARAGE | | |
| RENDERING 1 | | |
| C.U.P. SUBMITTAL | | |
| Project number | 18001 | |
| Date | 1/25/2019 | |
| Drawn by | MT | |
| Checked by | A.1 | |
| Scale | | |



CORESLAB[®]
STRUCTURES
(TAMPA) INC.

ROB SCHAEFFER, AIA LIC. #AR99177



ROB SCHAEFFER
VISUALIZATION
AND PLANNING

407.284.7309
rob@rsvpds.com
www.rsvpds.com

700 w. monroe blvd ste. 105
winter park, florida 32789

POULOS & BENNETT

CRJA [B]

landscape architects

| Revision Schedule | | |
|-------------------|----------------------|---------------|
| Revision Number | Revision Description | Revision Date |

ROLLINS COLLEGE
WINTER PARK, FLORIDA

PARKING GARAGE

RENDERING 2

C.U.P. SUBMITTAL

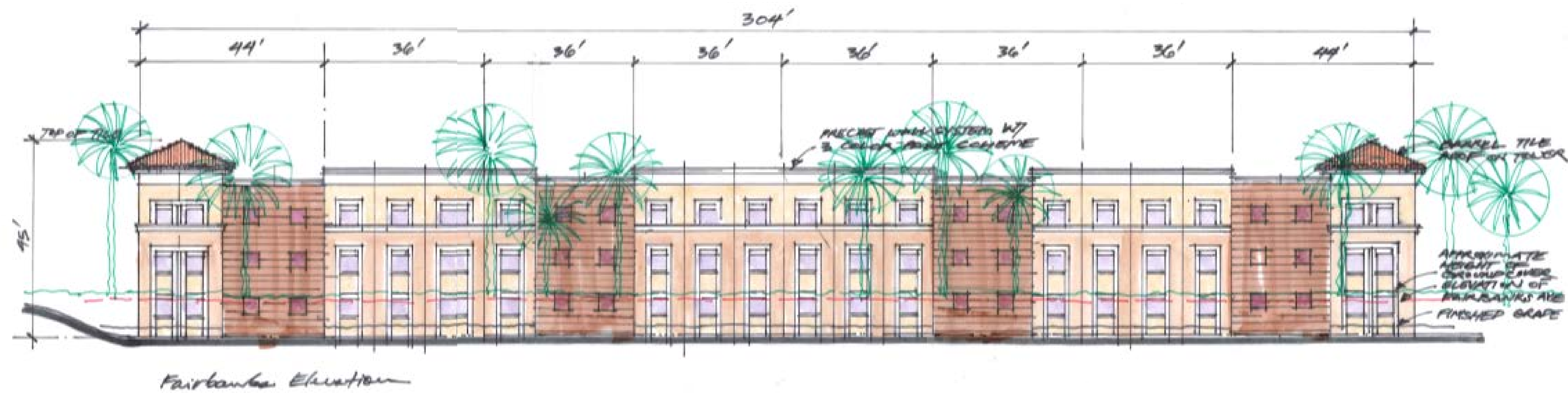
| | |
|----------------|-------|
| Project number | 18001 |
|----------------|-------|

| | |
|----------|-----------|
| Date | 1/25/2019 |
| Drawn by | MT |

| | |
|------------|----|
| Drawn by | MM |
| Checked by | |
| | |

A.2

Scale



CORES LAB
STRUCTURES
(TAMPA) INC.

ROB SCHAEFFER, AIA LIC. #AR99177

RS
ROB SCHAEFFER
VISUALIZATION
AND PLANNING
407-284-7309
rob@rsvp.com
100 W. MONROE BLVD. SUITE 105
WINTER PARK, FLORIDA 32789

RSVP
POULOS & BENNETT

CRJA **IBI**
landscape architects

| Revision Schedule | | |
|---|----------------------|---------------|
| Revision Number | Revision Description | Revision Date |
| ROLLINS COLLEGE WINTER PARK, FLORIDA PARKING GARAGE | | |
| HAND SKETCH | | |
| C.U.P. SUBMITTAL | | |
| Project number | 18001 | |
| Date | 1/25/2019 | |
| Drawn by | MT | |
| Checked by | | |
| A.3 | | |
| Scale | | |



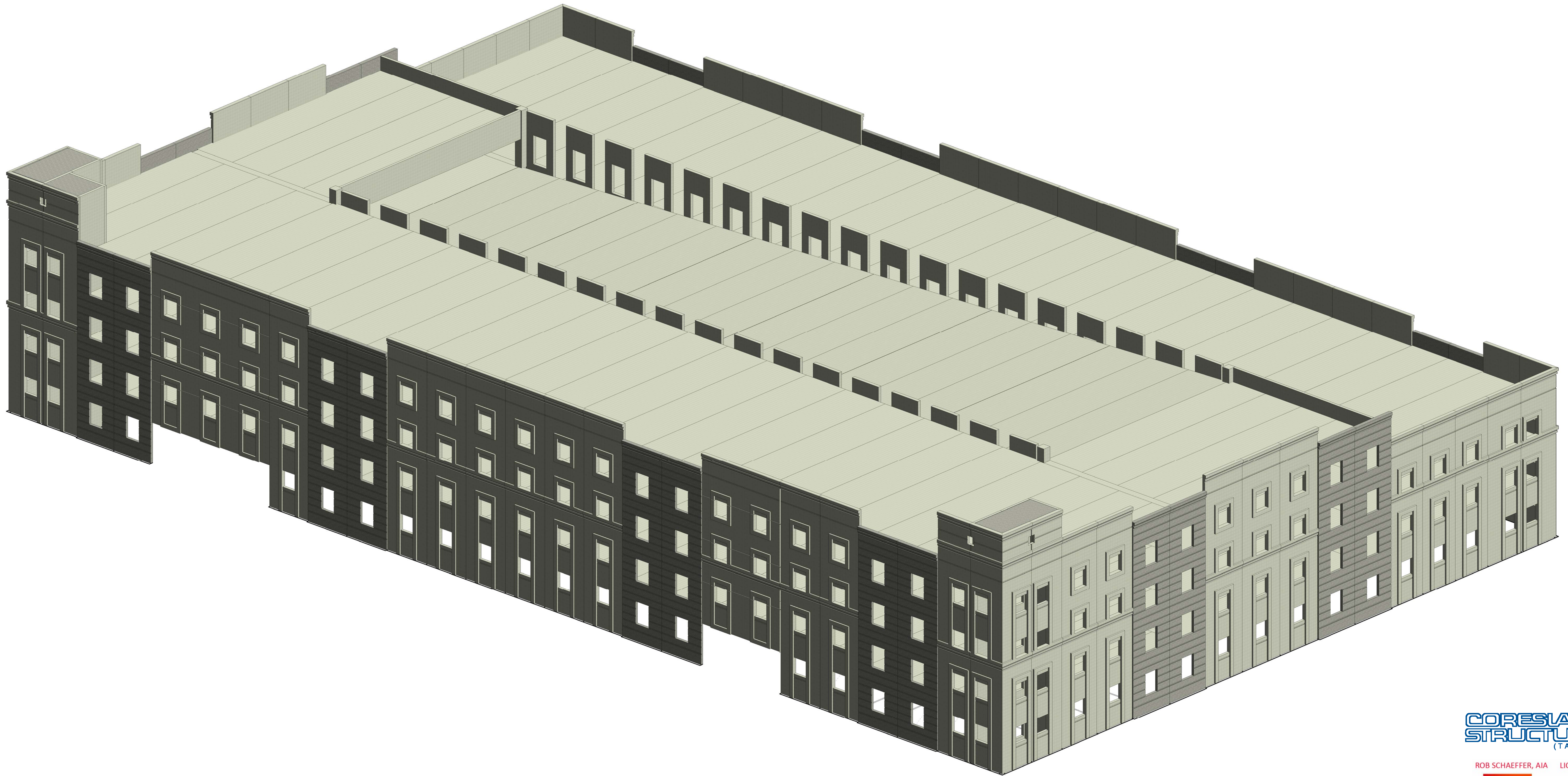
| landscape architects | | |
|---|----------------------|---------------|
| Revision Schedule | | |
| Revision Number | Revision Description | Revision Date |
| | | |
| ROLLINS COLLEGE WINTER PARK, FLORIDA | | |
| PARKING GARAGE | | |
| LEVEL 2 PLAN | | |
| C.U.P. SUBMITTAL | | |
| Project number | 18001 | |
| Date | 1/25/2019 | |
| Drawn by | MT | |
| Checked by | | |
| CS.2 | | |
| Scale | 1 : 140 | |



| landscape architects | | |
|---|----------------------|---------------|
| Revision Schedule | | |
| Revision Number | Revision Description | Revision Date |
| | | |
| | | |
| ROLLINS COLLEGE WINTER PARK, FLORIDA | | |
| PARKING GARAGE | | |
| | | |
| LEVEL 3-4 | | |
| | | |
| C.U.P. SUBMITTAL | | |
| Project number | 18001 | |
| Date | 1/25/2019 | |
| Drawn by | MT | |
| Checked by | | |
| | | |
| CS.3 | | |
| Scale | 1 : 140 | |



| Revision Schedule | | |
|---|----------------------|---------------|
| Revision Number | Revision Description | Revision Date |
| | | |
| ROLLINS COLLEGE WINTER PARK, FLORIDA | | |
| PARKING GARAGE | | |
| LEVEL 5 PLAN | | |
| C.U.P. SUBMITTAL | | |
| Project number | 18001 | |
| Date | 1/25/2019 | |
| Drawn by | MT | |
| Checked by | | |
| CS.4 | | |
| Scale | 1 : 140 | |



1 {3D}
S.10

CORES LAB
STRUCTURES
(TAMPA) INC.

ROB SCHAEFFER, AIA LIC. #AR99177

RS
ROB SCHAEFFER
VISUALIZATION
AND PLANNING
407.288.7309
rob@rsvp.com
www.rsvp.com
100 W. MONROE BLVD. SUITE 105
WINTER PARK, FLORIDA 32789

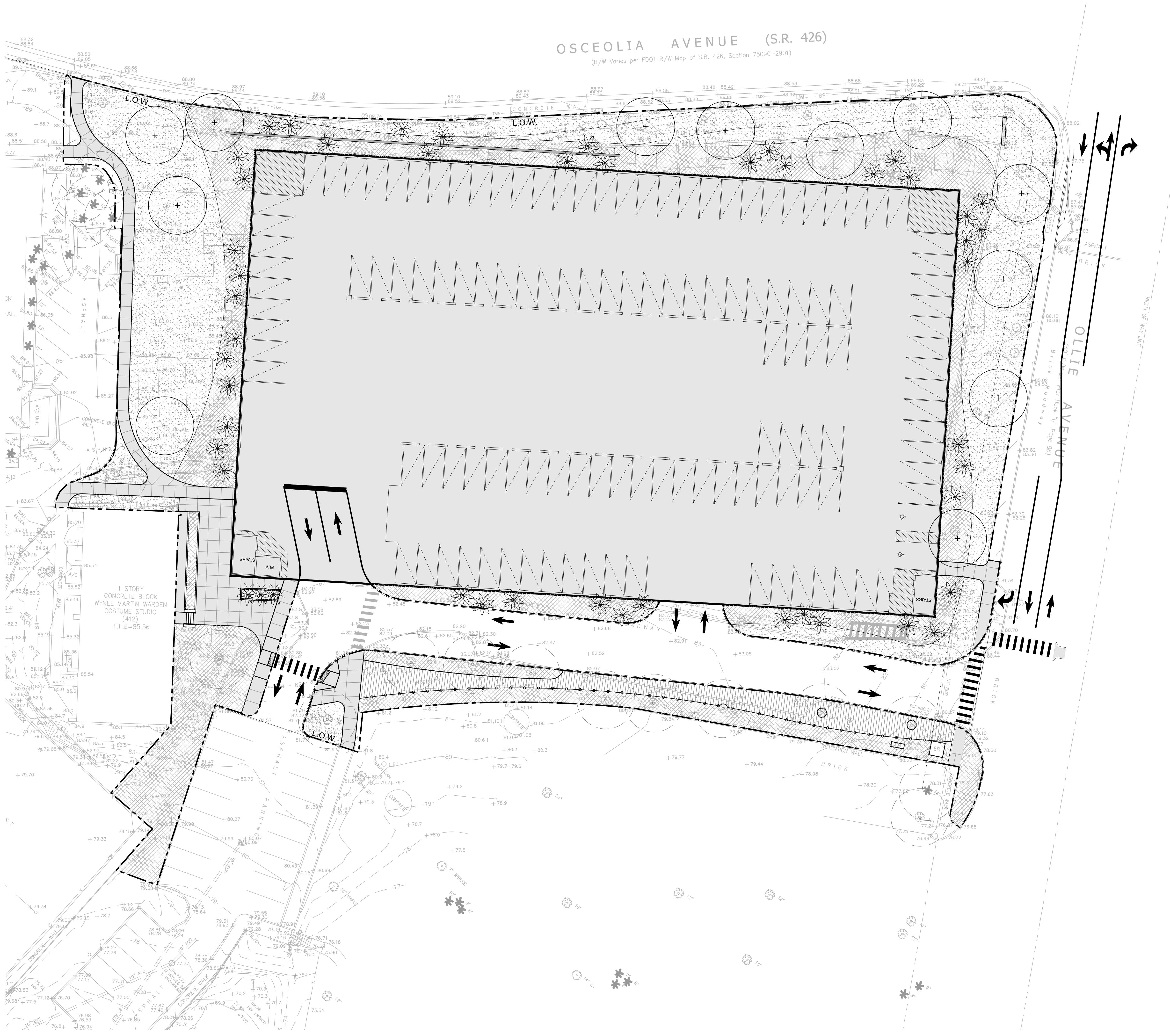
RSVP

POULOS & BENNETT

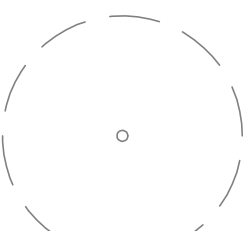
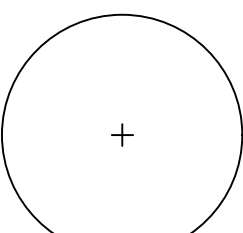

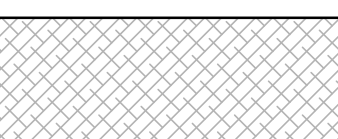
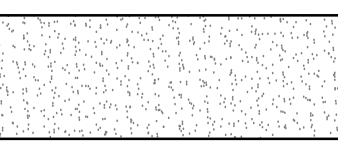
CRJA **IBI**

landscape architects

| Revision Schedule | | |
|---|----------------------|---------------|
| Revision Number | Revision Description | Revision Date |
| ROLLINS COLLEGE WINTER PARK, FLORIDA PARKING GARAGE | | |
| 3D VIEW | | |
| C.U.P. SUBMITTAL | | |
| Project number | 18001 | |
| Date | 1/25/2019 | |
| Drawn by | MT | |
| Checked by | | |
| S.10 | | |
| Scale | | |



PLANTING LEGEND

-  EXISTING TREE TO REMAIN
-  PROPOSED DECIDUOUS TREE - (QUERCUS VIRGINIANA)
-  PROPOSED PALM (SABAL PALM)
-  PROPOSED SHRUB PLANTING
-  PROPOSED IRRIGATED LAWN

RS ROB SCHAEFFER
VISUALIZATION
AND PLANNING
RSVP 407.284.7309
rob@rsvpd.com
www.rsvpd.com
700 w. morse blvd ste. 105
winter park, florida 32789

POULOS & BENNETT

CRJA **IBI**

landscape architects

| Revision Schedule | | |
|--------------------|----------------------|----------------|
| Revision Number | Revision Description | Revision Date |
| ROLLINS COLLEGE | | |
| NEW PARKING GARAGE | | |
| PLANTING PLAN | | |
| C.U.P. SUBMITTAL | | |
| Project number | | 18-181 |
| Date | | 01/25/2019 |
| Drawn by | | CRJA-IBI GROUP |
| Checked by | | CRJA-IBI GROUP |
| L100 | | |
| Scale | | |

TOPOGRAPHIC SURVEY



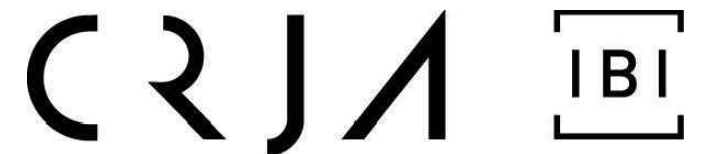
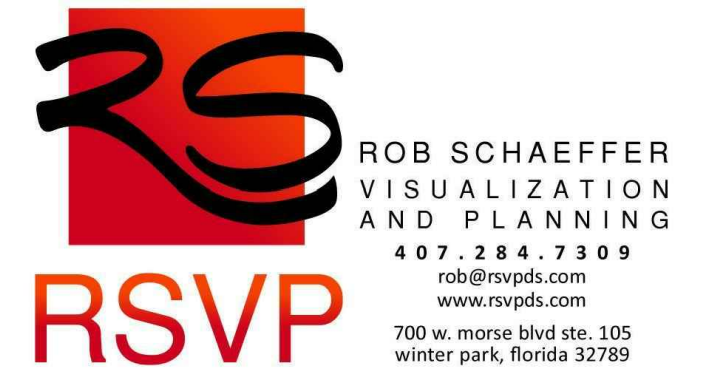
LEGEND & ABBREVIATIONS:

- NAIL AND DISK
- BENCH MARK/SITE OR TEMP
- DRAINAGE MANHOLE
- SANITARY MANHOLE
- WELL
- AIR CONDITIONING UNIT
- TELEPHONE RISER
- TRAFFIC SIGN
- POST
- BORING
- MANHOLE
- VENT
- VALVE
- DRAIN FIELD
- BOLLARD
- SERVICE POLE
- SANITARY MANHOLE
- LIGHT POLE
- ELECTRIC BOX
- GAS VALVE
- GAS ANCHOR
- GREASE TRAP
- GAS METER
- ELECTRIC SERVICE METER
- CLEANOUT
- BURIED TELEPHONE PEDESTAL
- BURIED CATV PEDESTAL
- WATER VALVE
- WATER METER
- IRRIGATION VALVE
- FIRE HYDRANT
- BACK FLOW PREVENTER
- FLAT GATE INLET
- WATERED END SECTION
- HEADWALL
- HANDRAIL
- X - CHAIN LINK FENCE
- RWL - RECLAIMED WATER LINE
- FM - FORCE MAIN
- BTL - BURIED TELEPHONE LINE
- GAS - GAS LINE
- BFO - BURIED FIBEROPTICS CABLE
- BEL - BURIED ELECTRIC LINE
- BCL - BURIED CATV LINE
- UNK - UNKNOWN UTILITY LINE
- CWL - CHILLED WATER LINE
- COMM - COMMUNICATION LINE
- SS - SANITARY LINE
- DL - DRAINAGE LINE
- BCL - BURIED CATV LINE
- TMS - TRAFFIC MONITOR SIGNAL
- LS - LICENSED BUSINESS
- LS - LICENSED SURVEYOR
- IDENTIFICATION
- FFE - FINISH FLOOR ELEVATION
- HDPE - HIGH DENSITY POLYETHYLENE PIPE
- CPV - CORRUGATED PLASTIC PIPE
- RCP - REINFORCED CONCRETE PIPE
- PVC - POLYVINYL CHLORIDE PIPE
- IRC - IRON ROD AND CAP
- INV - INVERT
- C/L - CENTERLINE
- ELP - ELECTRIC PANEL
- CBW - CONCRETE BLOCK WALL
- TREE SIZE SHOWN IN TRUNK DIAMETER IN INCHES
- PALM
- TREE
- OAK
- PINE
- MAGNOLIA
- SP - SPRUCE
- PI - PINE
- R - RAIN
- CAM - CAMPHOR
- CE - CEDAR
- CH - CHINA BERRY
- M - MAPLE
- MY - MYRTLE
- UK - UNKNOWN
- CY - CYPRESS



604 COURTLAND STREET SUITE 101
PHONE: (407) 960-5980
ORLANDO, FLORIDA 32804
CERTIFICATE OF AUTHORIZATION # 2936

LAND DEVELOPMENT
SURVEYING
CONSTRUCTION ENGINEERING INSPECTION



landscape architects

| Revision Schedule | | |
|-------------------|----------------------|---------------|
| Revision Number | Revision Description | Revision Date |

Orange County

ROLLINS COLLEGE
NEW PARKING GARAGE
TOPOGRAPHIC SURVEY

C.U.P. SUBMITTAL

| | |
|----------------|------------|
| Project number | 19-002 |
| Date | 01/25/2019 |
| Drawn by | JMT |
| Checked by | MDS |

C100

Scale 1" = 30'-0"

SURVEYOR'S REPORT

- This survey was performed without the benefit of a Title Report.
- Utility locations shown in this survey are based on field location of markings by Blood Hound, LLC Underground Utility locating Company. Carnahan Proctor and Cross does not warrant the field markings. Additional underground facilities may exist in the area. No excavation or verification of underground utilities was performed.
- Utility locations shown hereon are based on surface features. Additional sub-surface utilities may exist that have not been field located.
- This survey does not identify the limits or extent of potential jurisdictional wetlands, if any exist on the subject property.
- Features shown by symbol as indicated in the legend are not to scale.
- This is not a Boundary Survey.
- Horizontal datum is based on Florida state Plane Coordinate System NAD83 Florida East Zone
- Vertical Datum is based on Orange County Benchmark L-1161-028 with published elevation of 71.597 NAVD 88.

SURVEYORS CERTIFICATION:

I hereby state that this Topographic Survey is true and correct to the best of my knowledge and belief as surveyed in the field under my direction on November 02, 2018, and that this Survey meets the Standards of Practice for Florida Surveyors and Mappers, as set forth in Chapter 5J-17.05 of the Florida Administrative Code, pursuant to Chapter 472.027, Florida Statutes.

For the firm by: James W. Quartel, P.S.M.
Professional Surveyor and Mapper
Florida License No. 6032

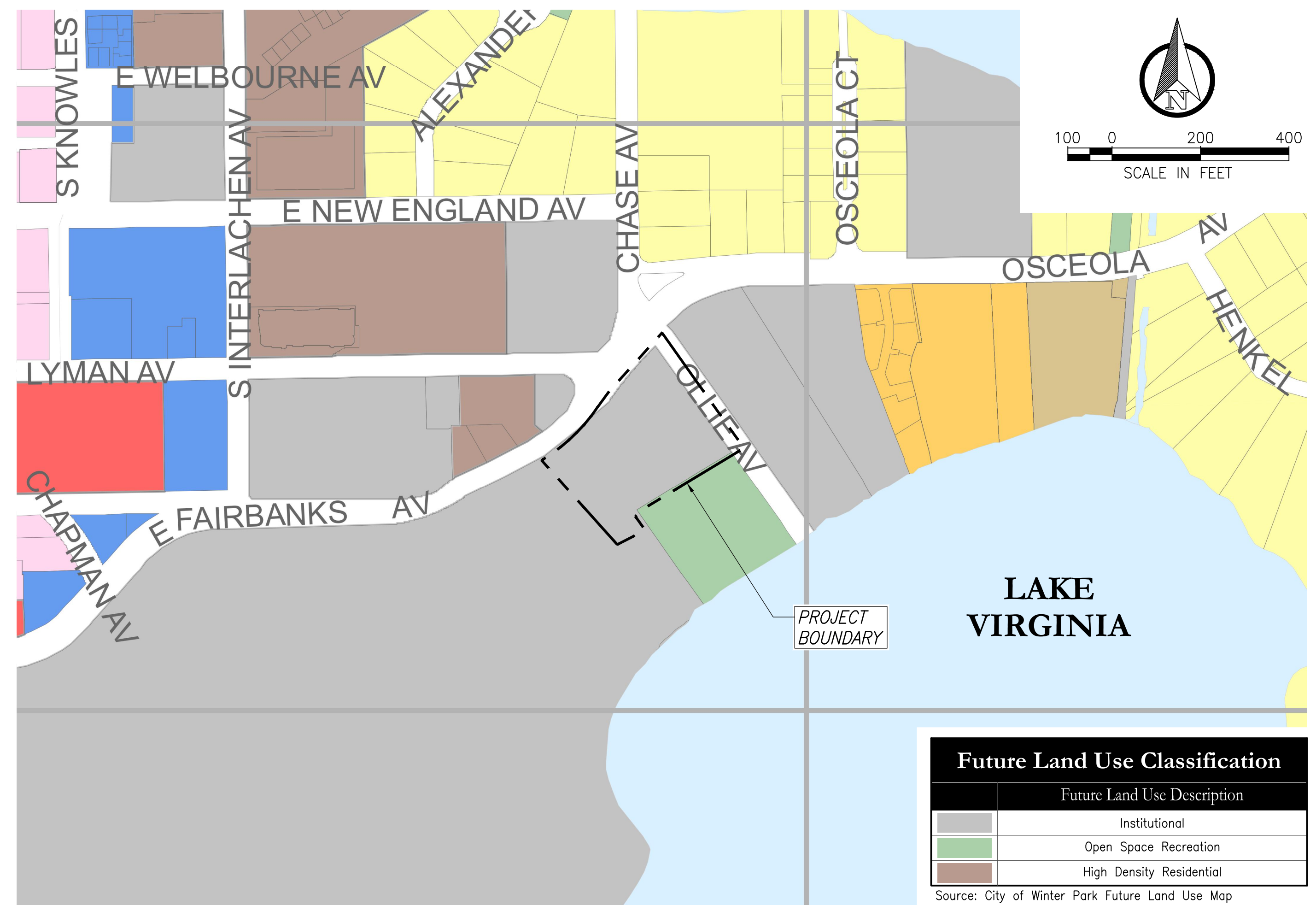
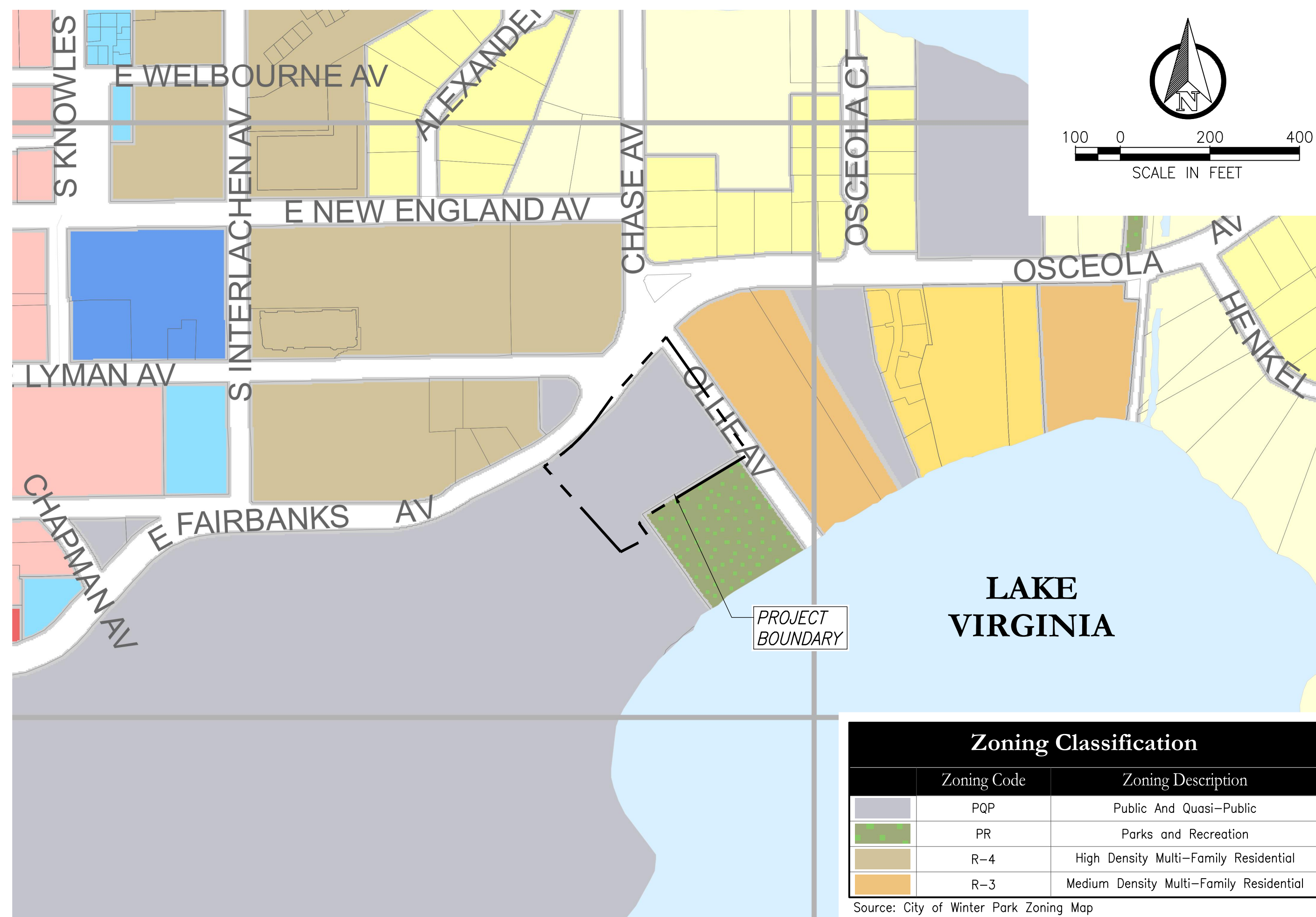
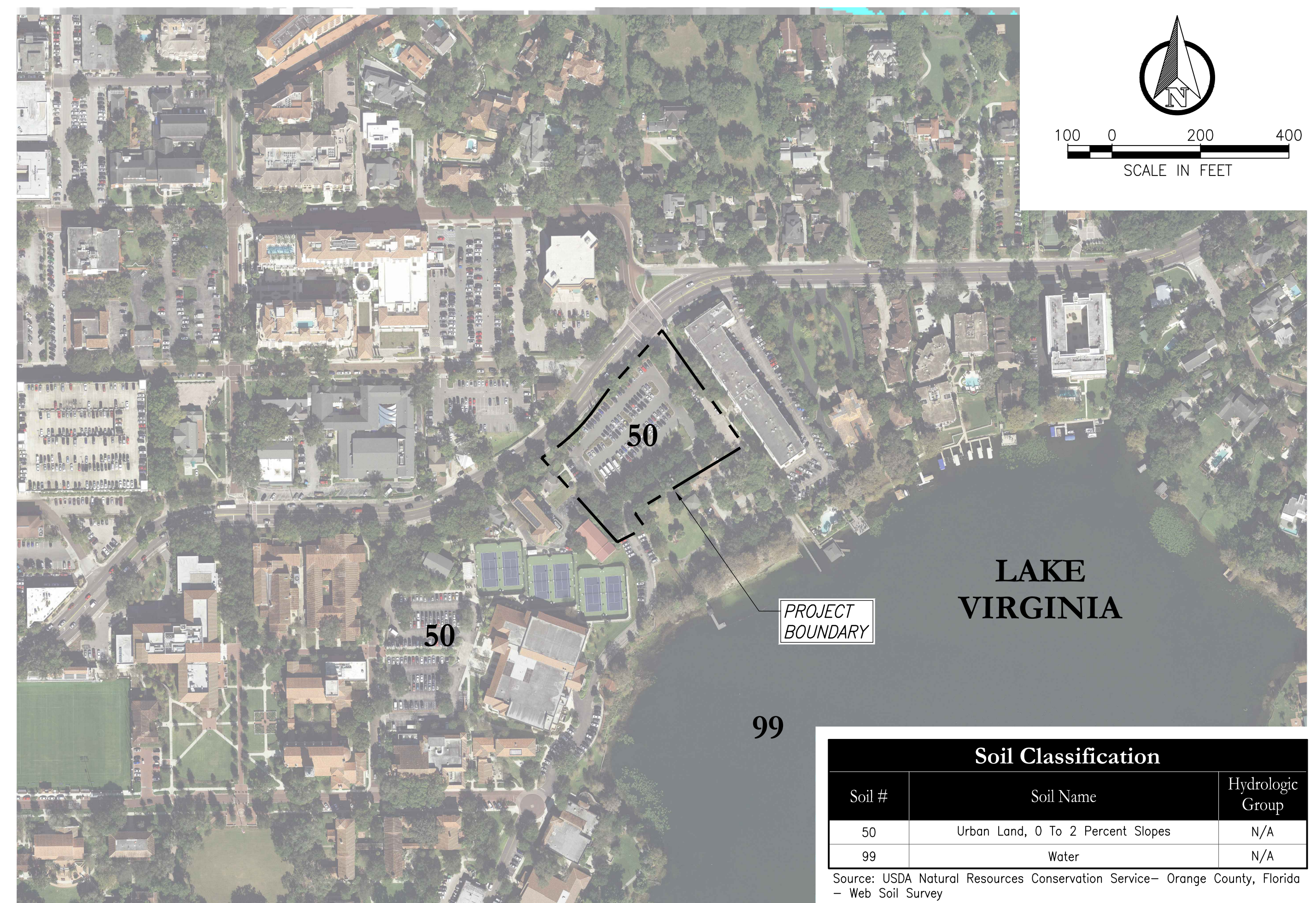
Rollins College
NE Campus Area

Orange County

TOPOGRAPHIC
SURVEY

Sheet 1 of 2

Drawing Number
151000
Project Number



1 EXISTING CONDITIONS PLAN

RSVP

ROB SCHAEFFER
VISUALIZATION
AND PLANNING
407.284.7309
rob@rsvpds.com
www.rsvpds.com

700 w. morse blvd ste. 105
winter park, florida 32789

POULOS & BENNETT

CRJA **IBI**

landscape architects

| Revision Schedule | | |
|-------------------|----------------------|---------------|
| Revision Number | Revision Description | Revision Date |
| | | |

ROLLINS COLLEGE

NEW PARKING GARAGE

EXISTING CONDITIONS PLAN

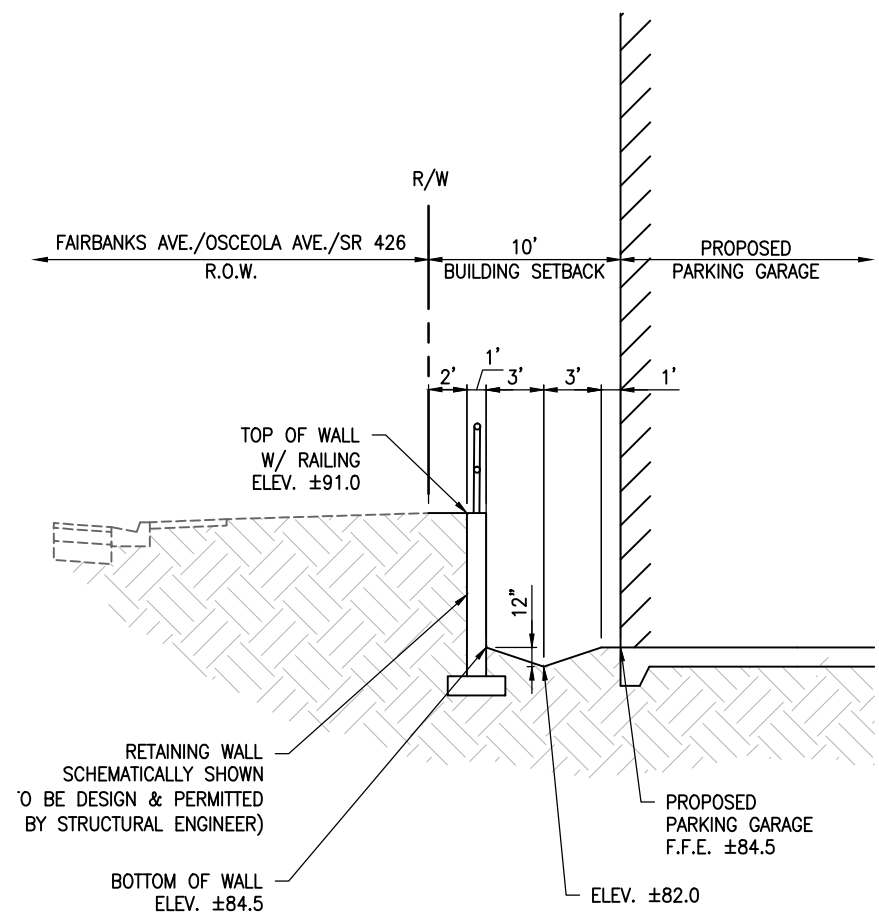
C.U.P. SUBMITTAL

| | |
|----------------|------------|
| Project number | 19-002 |
| Date | 01/24/2019 |
| Drawn by | JMT |
| Checked by | MDS |

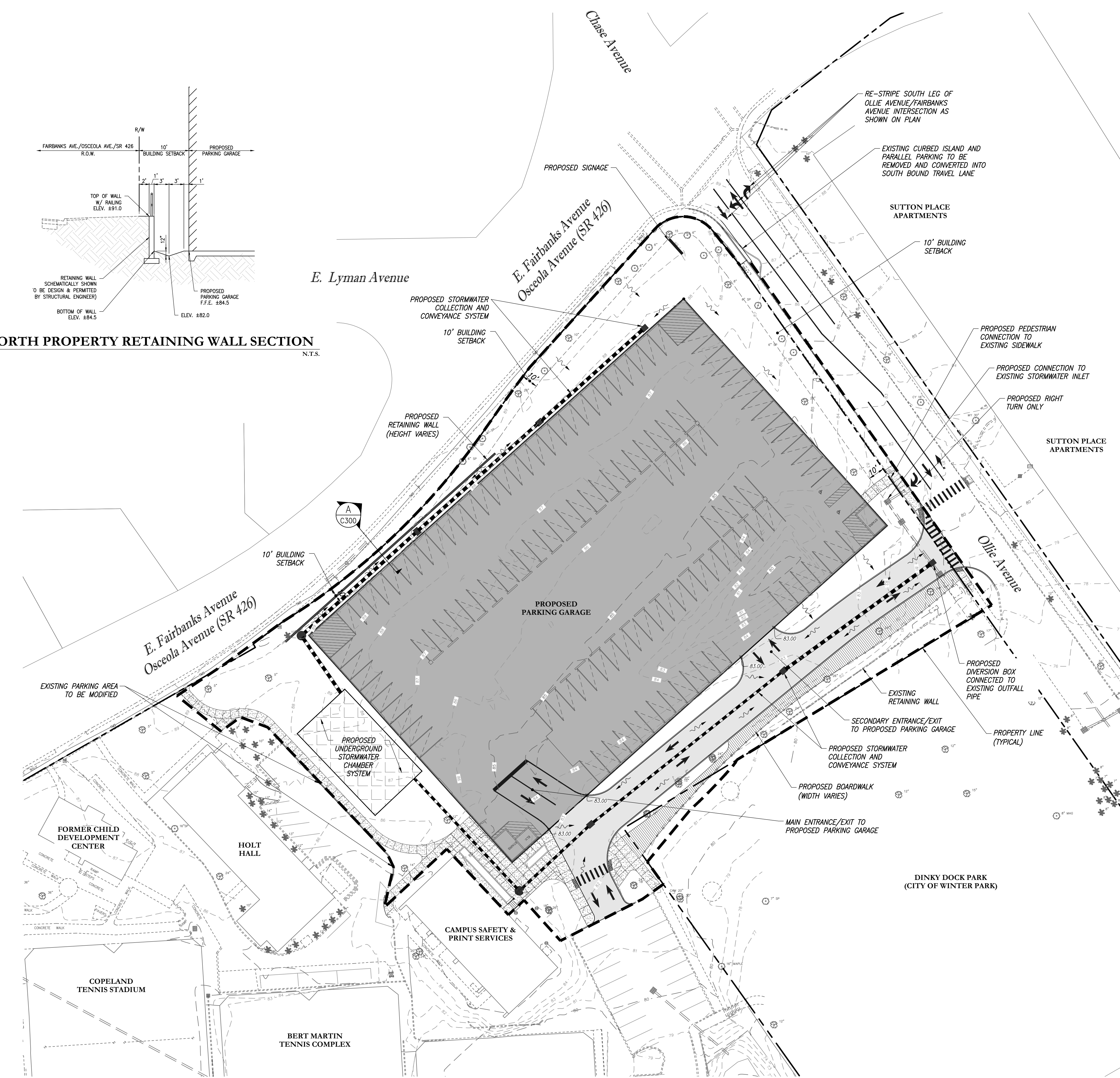
C200

Scale 1" = 200'-0"

A NORTH PROPERTY RETAINING WALL SECTION
N.T.S.



1 GRADING AND DRAINAGE PLAN
1" = 30'-0"



LEGEND

- RIGHT-OF-WAY/PROPERTY LINE
- BUILDING SETBACK LINE
- BASIN LINE
- PROPOSED PARKING GARAGE
- PROPOSED PAVEMENT
- PROPOSED STORMWATER UNDERGROUND CHAMBER SYSTEM (SIZE & LOCATION TO BE FINALIZED DURING FINAL ENGINEERING DESIGN & PERMITTING)
- PROPOSED CONCRETE SIDEWALK

STORMWATER MANAGEMENT:
ONSITE STORMWATER MANAGEMENT FACILITIES SHALL BE PROVIDED IN ACCORDANCE WITH THE CITY OF WINTER PARK AND ST. JOHNS RIVER WATER MANAGEMENT DISTRICT (SJRWMD) CRITERIA.
THE STORMWATER MANAGEMENT SYSTEM SHALL PROVIDE WATER QUALITY TREATMENT AND ATTENUATION THROUGH AN UNDERGROUND RETENTION SYSTEM.

- CRITERIA**
- WATER QUALITY**
BASED UPON A PRE-APPLICATION MEETING WITH SJRWMD STAFF ON JANUARY 10, 2019, THE UNDERGROUND CHAMBER SYSTEM WILL BE NEED TO MEET THE REQUIREMENTS OF AN EXFILTRATION SYSTEM. THE UNDERGROUND CHAMBER SYSTEM WILL BE REQUIRED TO PROVIDE WATER QUALITY TREATMENT VOLUMES AS FOLLOWS:
- SJRWMD CRITERIA:** RETENTION OF THE FIRST ONE-HALF INCH (0.50 IN.) OR 1.25 INCHES OF RUNOFF FROM THE IMPERVIOUS AREA, WHICHEVER IS GREATER, PLUS AN ADDITIONAL ONE HALF INCH (0.50 IN.) OF RUNOFF FROM THE DRAINAGE AREA.
 - CITY OF WINTER PARK CRITERIA:** RETENTION ONSITE OF THE FIRST TWO INCHES (2.00 IN.) OF RUNOFF FROM ALL IMPERVIOUS SURFACES.
- SINCE THE SJRWMD CRITERIA IS MORE STRINGENT, THE SJRWMD CRITERIA WILL GOVERN.

ATTENUATION
BASED UPON A PRE-APPLICATION MEETING WITH SJRWMD STAFF ON JANUARY 10, 2019, THE POST-DEVELOPMENT DISCHARGE SHALL BE LESS THAN THE PRE-DEVELOPMENT DISCHARGE FOR THE MEAN ANNUAL AND 25-YEAR/24-HOUR STORM EVENT. THE PRE-DEVELOPMENT CONDITIONS USED IN THE ANALYSIS WILL BE BASED UPON THE PRE-DEVELOPMENT DATA AS PRESENTED IN SJRWMD PERMIT NO. 44453-13.

METHODOLOGY
THE PROPOSED STORMWATER MANAGEMENT SYSTEM CONSISTS OF AN UNDERGROUND STORMWATER CHAMBER SYSTEM WHICH IS SIZED TO PROVIDE THE REQUIRED WATER QUALITY TREATMENT VOLUME AND PEAK ATTENUATION. THE BOTTOM OF THE CHAMBER SYSTEM WILL BE SET A MINIMUM OF 2 FT. ABOVE THE SEASONAL HIGH GROUND WATER ELEVATION AS TO ALLOW THE SYSTEM TO RECOVER VIA INFILTRATION WITHIN 72 HOURS OF THE RAIN STORM EVENT.

UNDERGROUND CHAMBER SYSTEM (PRELIMINARY STORMWATER CALCULATIONS)

A. REQUIRED STORAGE VOLUME CALCULATION:

BASIN AREA = 2.33 ACRES
IMPERVIOUS AREA = 1.57 ACRES
REQUIRED TREATMENT VOLUME, THE GREATER OF:
0.5" X DRAINAGE AREA
1.25" X IMPERVIOUS AREA
PLUS AN ADDITIONAL 0.5" FROM THE DRAINAGE AREA

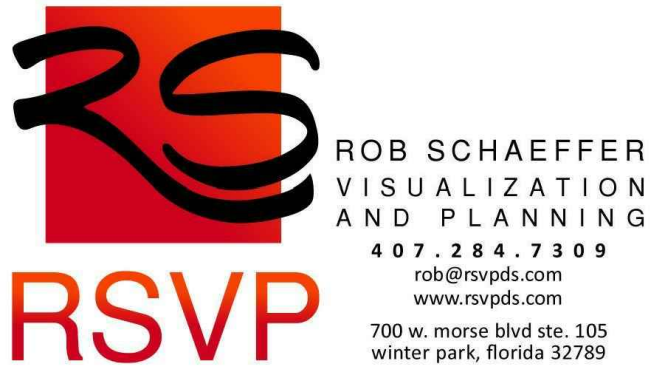
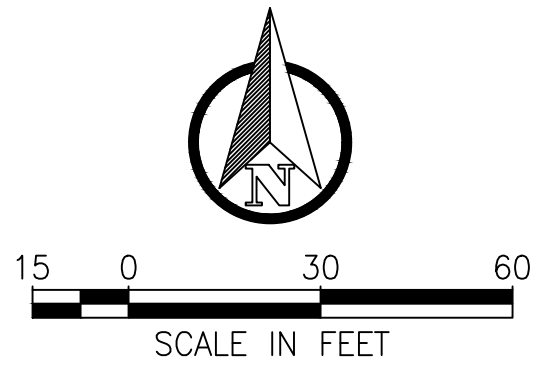
REQUIRED TREATMENT VOLUME:
 $0.5" \times 2.33 \text{ ACRES} \times \frac{1}{2} = 0.10 \text{ AC-FT}$
 $1.25" \times 1.57 \text{ ACRES} \times \frac{1}{2} = 0.16 \text{ AC-FT}$
PLUS AN ADDITIONAL 0.10 AC-FT (0.5" X DRAINAGE AREA)

REQUIRED TREATMENT VOLUME = 0.26 AC-FT

B. TREATMENT VOLUME PROVIDED

UNDERGROUND RETENTION AREA = 0.06 AC.
DEPTH OF CHAMBERS = 4.40 FT.

TOTAL TREATMENT VOLUME PROVIDED = 0.26 AC-FT



landscape architects

| Revision Schedule | | |
|---------------------------|----------------------|---------------|
| Revision Number | Revision Description | Revision Date |
| ROLLINS COLLEGE | | |
| NEW PARKING GARAGE | | |
| GRADING AND DRAINAGE PLAN | | |
| C.U.P. SUBMITTAL | | |
| Project number | 19-002 | |
| Date | 01/25/2019 | |
| Drawn by | JMT | |
| checked by | MDS | |
| C400 | | |
| Scale | 1" = 30'-0" | |