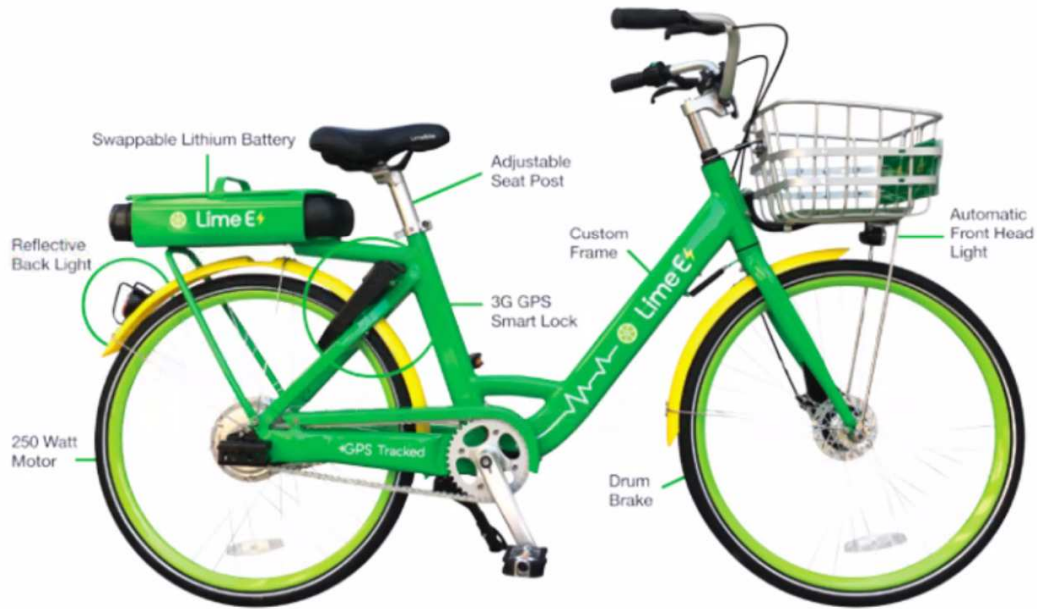


Courtney, ReThink; Jed Fluxman, Florida Lime

Jae Cox, Orlando and UCF Operations Manager



Lime-E Electric Assist Bikes - Reimagining smart mobility



Up to 15 mph



Operations Our operations team actively manages our bike fleet, rebalancing bikes and responding to any support calls.

Customer Service We maintain 24 hour customer service and respond to urgent issues within 2 hours during regular business hours.

Fleet management Our team will rebalance under-utilized bikes back into the fleet to meet higher demand and ensure distribution covers service area.

Maintenance We hire locally to cover all maintenance and routine checks of bikes.

Balancing the fleet We ensure unused or underused bikes are rebalance into the fleet.

We Invest in Your Community

Lime engages with local businesses, schools, officials and associations to nurture long-lasting partnerships. We leverage:

- business hubs
- local press
- street teams and events
- social media
- and online ads

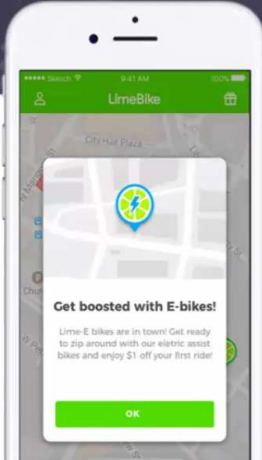

to educate, promote and empower local champions and enable the change we all want to see.

You are viewing J&E Cox's screen View Options

Talking: J&E Cox

Lime-E

Pedal Assist Electric Bikes



Why go electric?

Lime-E senses the torque being put on the pedals and adds just the right boost to help you get where you're going quickly and effortlessly.

No strain. No sweat. Just a simple, cost effective way to turn the last mile into the last several miles, even over the hilliest urban terrain.

MAX RANGE:
62 miles

MAX SPEED:
14.8 MPH

PRICE FOR USERS:
\$1 to unlock + \$0.15/min

Cyclingsavy.org

Avg speed 5mph

Time spent on the bike: 8min/per ride (average)

Length of service commitment?

72lbs, weight of e-bike

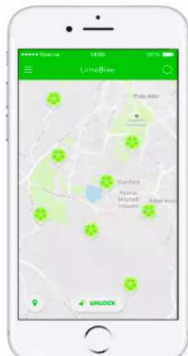
Lime-E

Pedal Assist Electric Bikes



Talking: J&E Cox

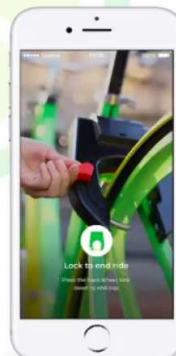
Step 1: Track & Locate
Lime-E



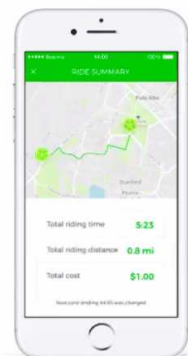
Step 2: Unlock via QR
Code or Text



Step 3: Lock to end the
ride



Step 4: Easily pay for the
ride.



Our approach to smart parking

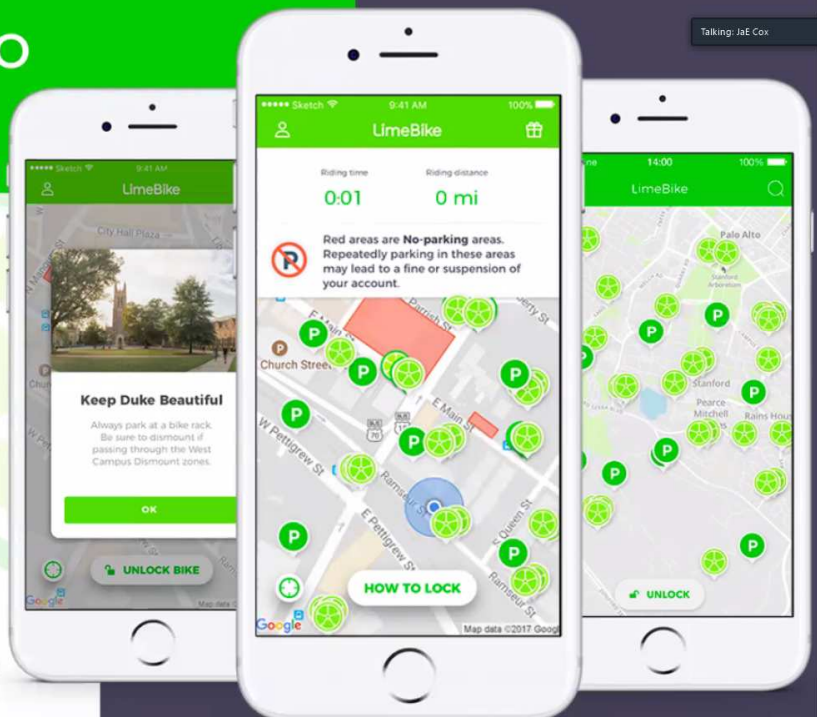
- Educate users on legal bike parking;
- In-app instructions on how & where best to park;
- Geo-fence existing legal parking area in our app;
- Partner with cities to develop more bike-friendly parking;
- Our operations team will respond to parking concerns;



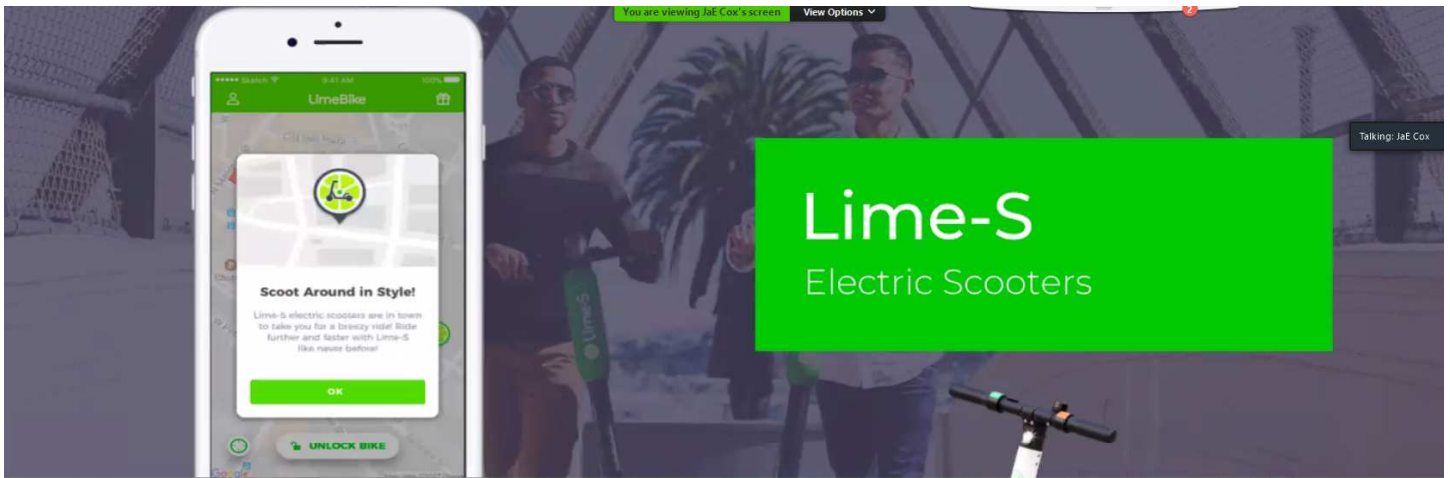
Available
Bikes



Recommended
Parking Spots



Talking: J&E Cox



Hop on and ride!

Smaller and more agile than a bike, Lime-S electric scooters are a convenient new mobility option that let you zip around the city pedal-free.

They require minimal parking space and are incredibly fun to ride!

MAX RANGE:
37 miles

MAX SPEED:
14.8 MPH

PRICE FOR USERS:
\$1 unlocking fee
\$0.15/minute to ride

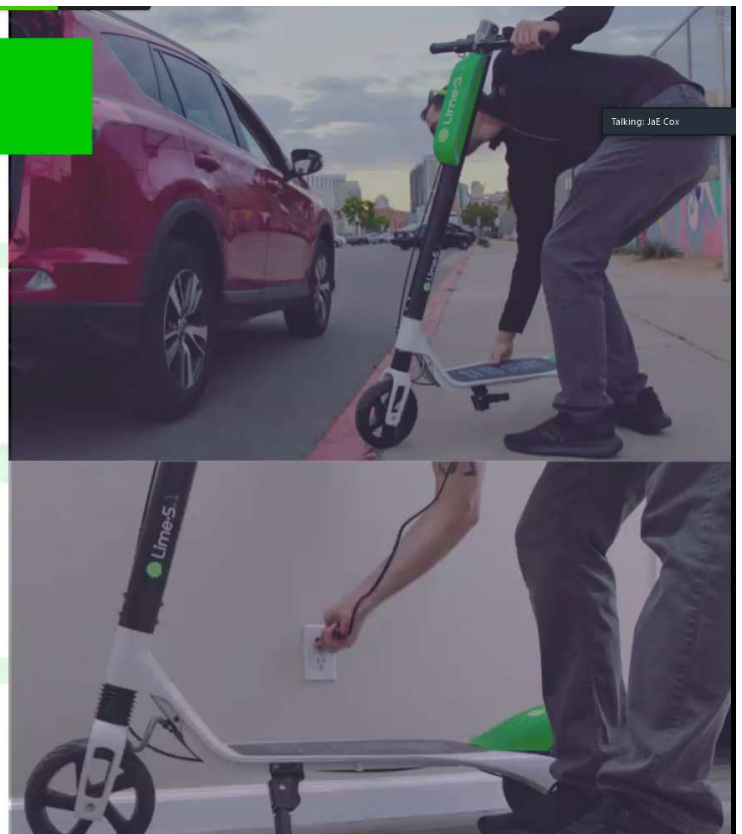


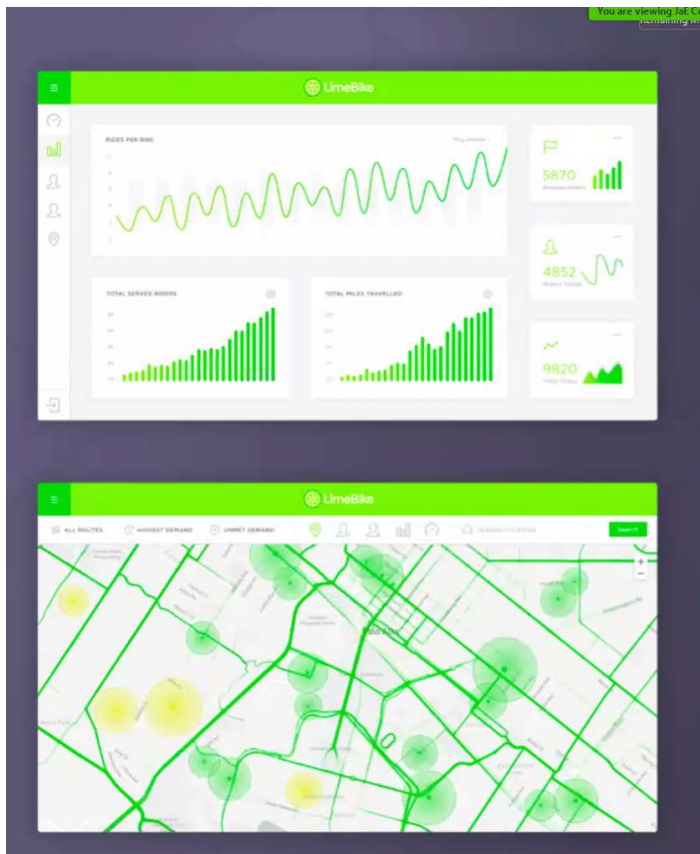
Cities that have these in FL: Ft. Lauderdale (500 units, 100K rides over a month)

Lime Juicers

Community members can earn money charging Lime scooters!

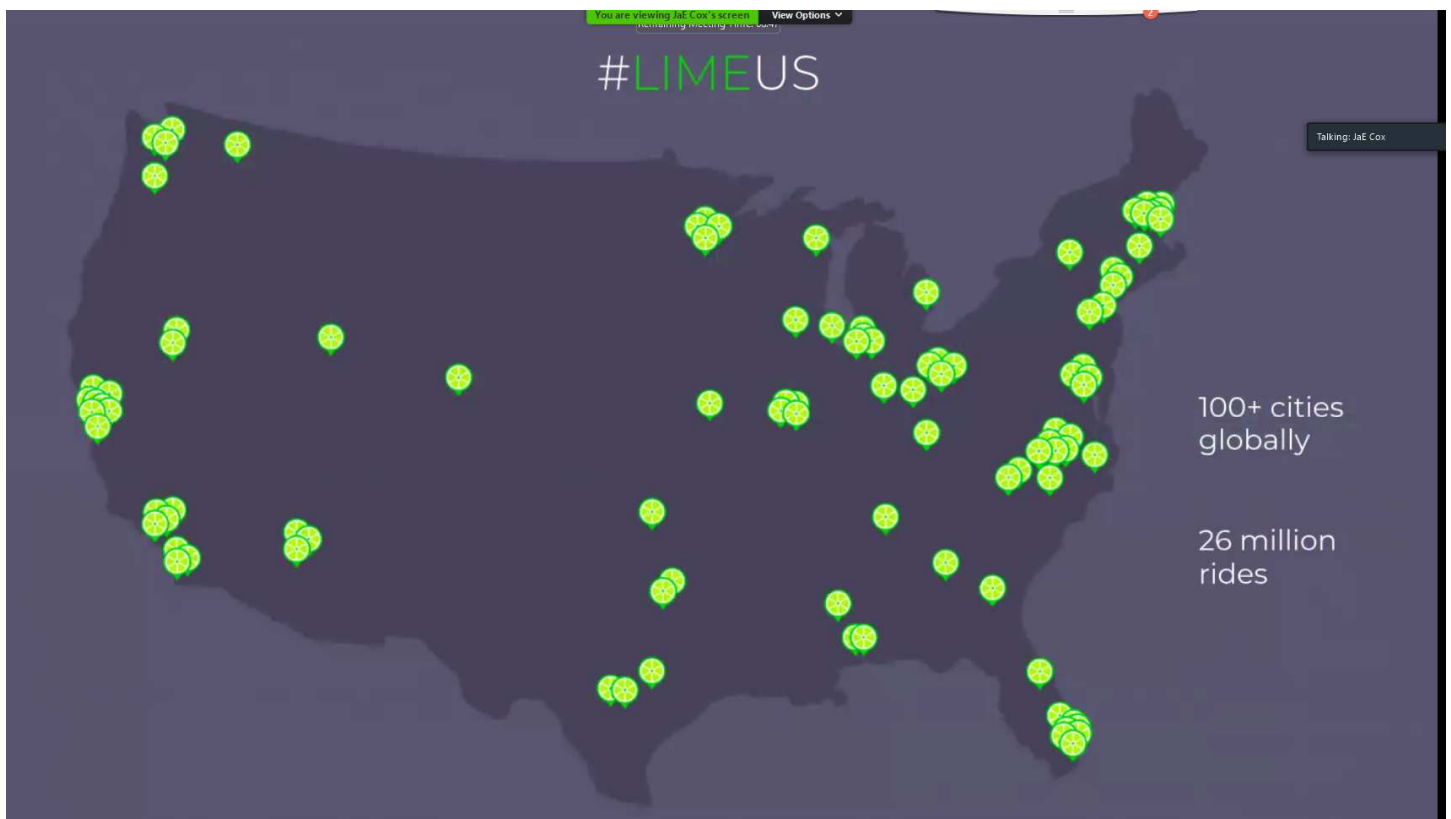
- 1) Juicers sign up through our app
- 2) Every evening, Juicers reserve scooters for charging
- 3) Juicers retrieve scooters and charge them overnight
- 4) Juicers return scooters to designated locations in the morning - and get \$\$!





We use **data** to make urban mobility **smarter**

- Free of docking stations, the optimal smart mobility program can be designed based on usage and actual rider demand data
- We share our data with cities for smarter mobility planning
- We support existing public transit, with 27% of our rides starting and finishing near transit stops



Advantages of dock-free bike sharing

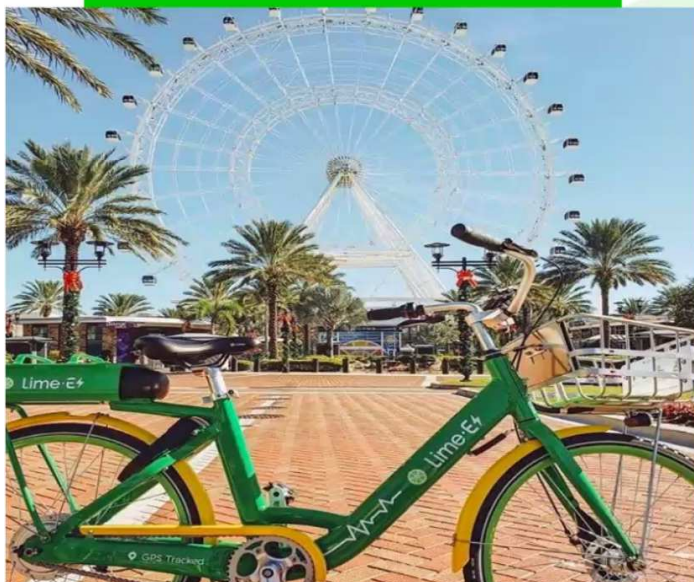
Talking: Jed Fluxman

No upfront capital investment required; translating to **more affordable** rides for users.

Devices **conveniently available**, allowing door-to-door trips.

Enhanced coverage and lower costs mean enough devices to equitably serve the public or be available to all sectors of the community.

Introducing New Markets



Why do Cities want dockless electric scooter and/or bikeshare programs?

Talking: Jed Fluxman

- Reduce carbon emissions
- Improve traffic congestion
- Offer transportation alternatives
- Solve First & Last Mile problem

How do Cities launch new programs?

- Pass local ordinances
- Permit Applications
- MOU
- RFP

Florida Market



Scooters

- Ft. Lauderdale
- Miami (Ordinance Passed)
- Tampa (Ordinance Passed)

Ordinance Scheduled

- Gainesville

E-Bikes & Bikes

- UCF & City of Orlando
- Key Biscayne
- Miami Lakes
- Miami Shores/Barry University
- North Miami/ Johnson & Wales University
- North Bay Village
- St. Thomas University
- Unincorporated Miami Dade

400 Orlando



Lime and You

Thank You

We are eager to serve.

Jed Fluxman - General Manager

Jed@li.me

Vivian Myrtetus - Community
Affairs Manager

Vivian@li.me

JaE Cox - Local Operations
Manager

jayson@li.me

Every city has the ability to deem them legal; city can say whether it is legal in just sidewalks or roads; statewide only human powered on sidewalks, localities can govern motorized vehicles

FL Law have to have lights on bike, under certain age of helmet