

# A Path to Success

## PROGRESS POINT – A PUBLIC REDEVELOPMENT VISION



**Goal:** To create a beautiful central public space for the Orange Avenue district that will give people a reason to go there even if they don't have specific need to visit a particular business.

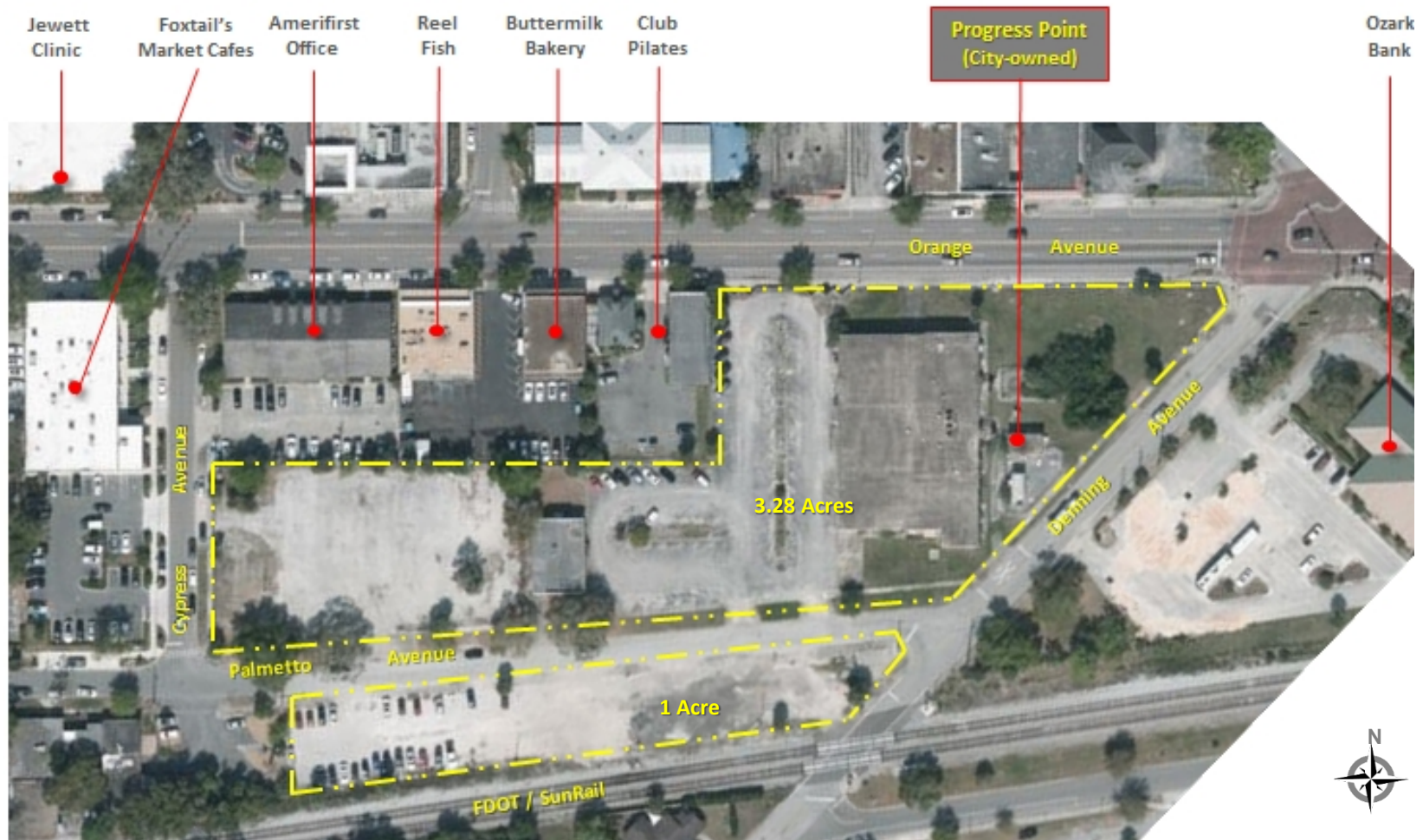


LandDesign

David Miller  
RH Miller Landscape Architect



## Existing Conditions





## PROGRESS POINT – A public redevelopment vision





# Activating the Park

A beautiful park where there's a collection of cafés,  
food markets, rooftop dining, convenient parking, bike  
trail, ice cream parlor, outdoor movie events –  
Then you have a great public space.



LandDesign

David Miller  
RH Miller Landscape Architect



# Activating the Park





# Activating Park with a Café - Food - Third Space Culture



Food Courts



# Activating Park with a Café - Food - Third Space Culture



Multiple Vendors



LandDesign

David Miller  
RH Miller Landscape Architect



# Activating Park with a Café - Food - Third Space Culture



The “Third Space”



LandDesign.

David Miller  
RH Miller Landscape Architect



# Activating Park with a Café - Food - Third Space Culture

## Rooftops Extend Park Experience

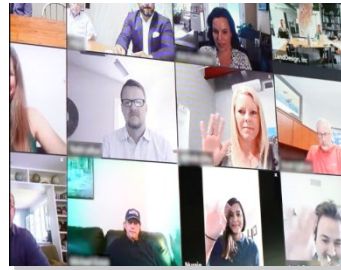


# A Shared Process

## City-Community-Private

TODAY

Est. 3-5 months



PARK  
VISION

PROGRAM  
SCHEMATIC DESIGN  
CIVIL ENG. DOCUMENTATION

PUBLIC & DEVELOPER  
INPUT

GENERAL  
REDEVELOPMENT  
GUIDELINES  
&  
ACTION PLAN

REQUEST  
FOR  
PARTNERSHIPS



LandDesign

David Miller  
RH Miller Landscape Architect



# Tasks/Deliverables

## **PUBLIC & DEVELOPER INPUT:**

**High-level assessment of public & developer drivers.**

## **PROGRAM:**

**Written summary of the City's requirements for:**

- Park
- Future Buildings
- Supporting Infrastructure (parking, roadway, trails, utilities)

## **PRELIMINARY SCHEMATIC**

### **DESIGN OPTIONS:**

**Preliminary design options illustrating scale & relationship of Project components consisting of:**

- Site Plan (w/options)
- Site Sections, Massing & Yield
- 3D Visualization
- Budget

## **CIVIL ENGINEERING DOCUMENTATION:**

**Palmetto Roadway Re-alignment  
Site Grading/Drainage/Utilities/Parking  
Budget**



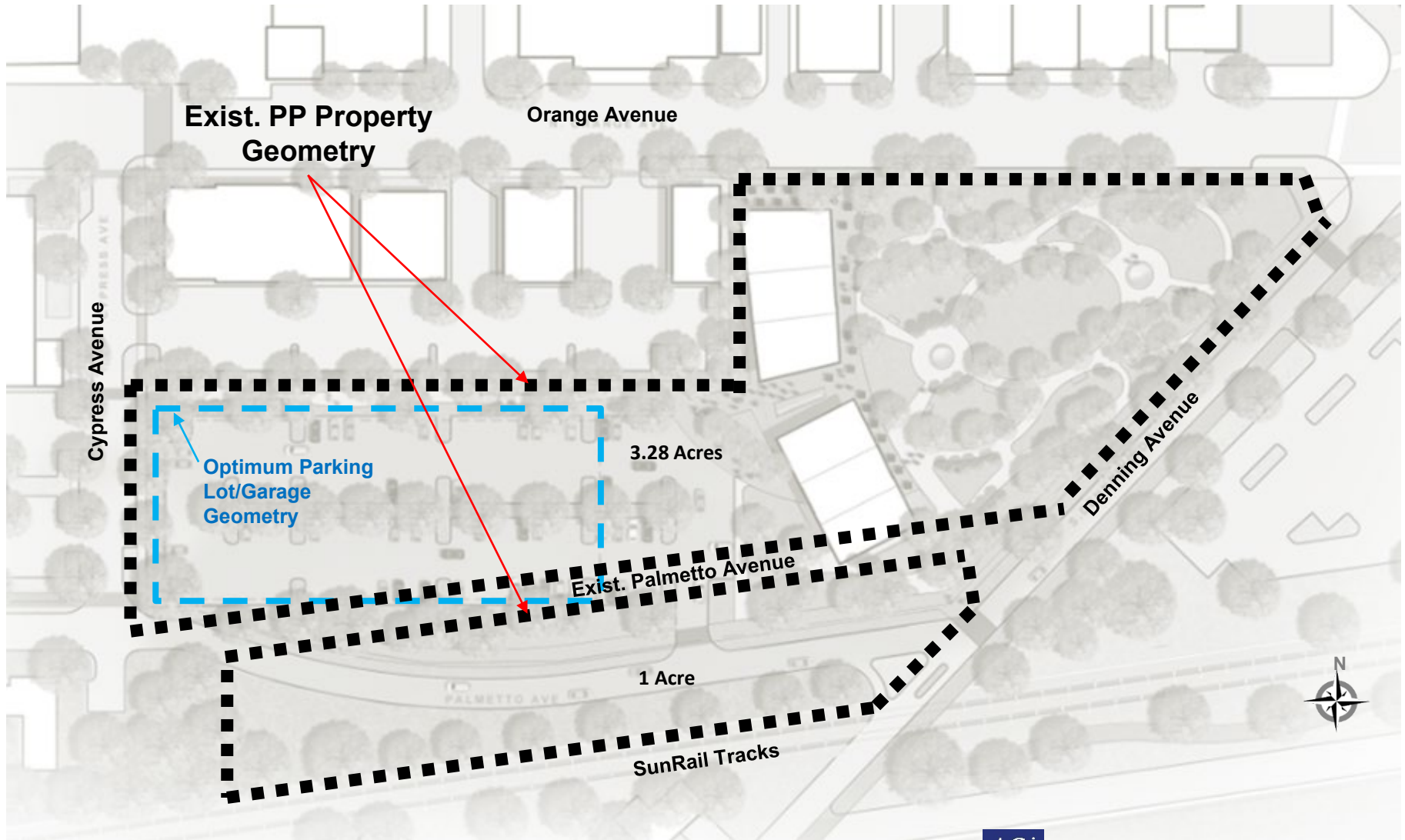
**LandDesign**

David Miller  
RH Miller Landscape Architect



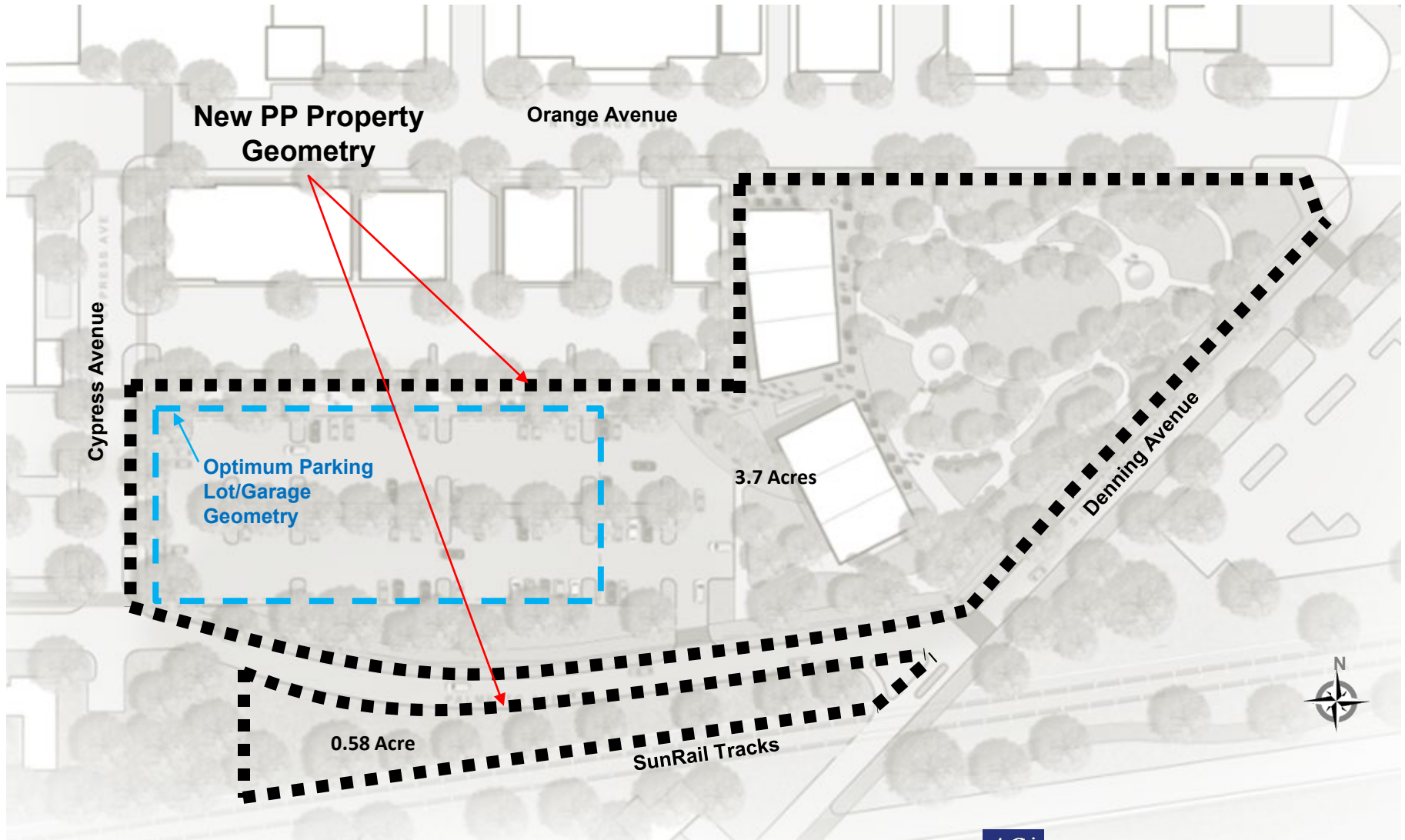
# Palmetto Realignment = Increased Value

## “BEFORE”





# Palmetto Realignment = Increased Value “AFTER”



# Scope of Work Budget/Schedule

PROGRAM:	Written summary of the City's requirements for: <ul style="list-style-type: none"><li>- Park</li><li>- Future Buildings</li><li>- Supporting Infrastructure (parking, roadway, trails, utilities)</li></ul>
PRELIMINARY SCHEMATIC DESIGN OPTIONS:	Preliminary design options illustrating scale & relationship of Project components consisting of: <ul style="list-style-type: none"><li>- Site Plan (w/options)</li><li>- Site Sections &amp; Elevations</li><li>- 3D Visualizations</li><li>- Budget</li></ul>
PUBLIC & DEVELOPER INPUT:	Review of preliminary market data, program, design options for public input.
CIVIL ENGINEERING DOCUMENTATION:	Palmetto Roadway Re-alignment/Parking Site Grading/Drainage/Utilities Budget
REDEVELOPMENT GUIDELINES & ACTION PLAN:	Presentation to Commission for Final Review/Approval of findings & next steps.
TOTAL SCOPE OF WORK:	\$ 150,000
ESTIMATED SCHEDULE:	3-5 MONTHS



LandDesign

David Miller  
RH Miller Landscape Architect



**Thank you for listening !**



LandDesign

David Miller  
RH Miller Landscape Architect