

Backyard Chicken Pilot Program Ordinance



Backyard Chicken Pilot Program Ordinance



April 13, 2020 Commission Meeting

Sustainability Staff provided draft ordinance based on Orlando and Maitland Ordinances; Commission provided feedback (i.e., 50 permits, 6' height limit, 2 yr.pilot program, code compliant lots) and asked it be reviewed by KWPB&S, P&Z and be brought back to Commission

July 13, 2020 KWPB&S Board Meeting

Sustainability Staff provided updated draft ordinance based on Commission's discussion; Board recommended ordinance with amendments (i.e., access to food/water at all times, clarify waste materials must be composted or bagged and trashed; prohibited in front yards only; increased height limit to 7'); Board also discussed screening/fencing but agreed it should not be included as an amendment.

August 4, 2020 Planning & Zoning Board Meeting

Sustainability Staff provided updated draft ordinance based on KWPB&S Board meeting; Board recommended ordinance with amendments (i.e., prohibit in side and front yards; decrease # of permits to 25; require neighbor consent)

Basics:

- 24-month Pilot Program
- Permit required (Building official)
- Requires neighbors consent
- Requires Photos/Site Plan of Coop
- Follow-up Inspection
- 25 permit maximum
- Max 4 chickens per household
- Single Family Homes Only
- Prohibited in Front and Side Yards
- Max Height 7'
- Personal Use Only
- No slaughtering on premises
- Requires proof of UF/IFAS Class Completion

Reasons to keep urban backyard chickens



Why Chickens?

- Have a steady supply of fresh eggs
- Have the knowledge of where your eggs came from
- Keep a "peck"-uliar pet
- An "eggs"-cellent opportunity to help teach kids responsibility
- Produce a valuable manure for composting

Topics covered in the UF/IFAS Extension class:

- Chicken Nutrition
- Local Ordinance Requirements
- Biosecurity (Keeping you and your birds healthy)
- Egg Production
- Proper Coop Construction

Neighboring Programs



➤ Update from neighboring cities

- Orlando-75 permits issued (pilot 2012, ordinance 2016)
- Maitland-10 permits issued (2013, ordinance 2014)
- Longwood-0 permits (ordinance 2018)

➤ Similarities in ordinances

- Rear yard; \$50 permit fee; chicken-care class requirement; site plan approval; first-come, first served; max # of chicken: 4; single-family residences only; PROHIBITED: selling eggs/chickens, slaughtering on premises; roosters + other poultry/fowl

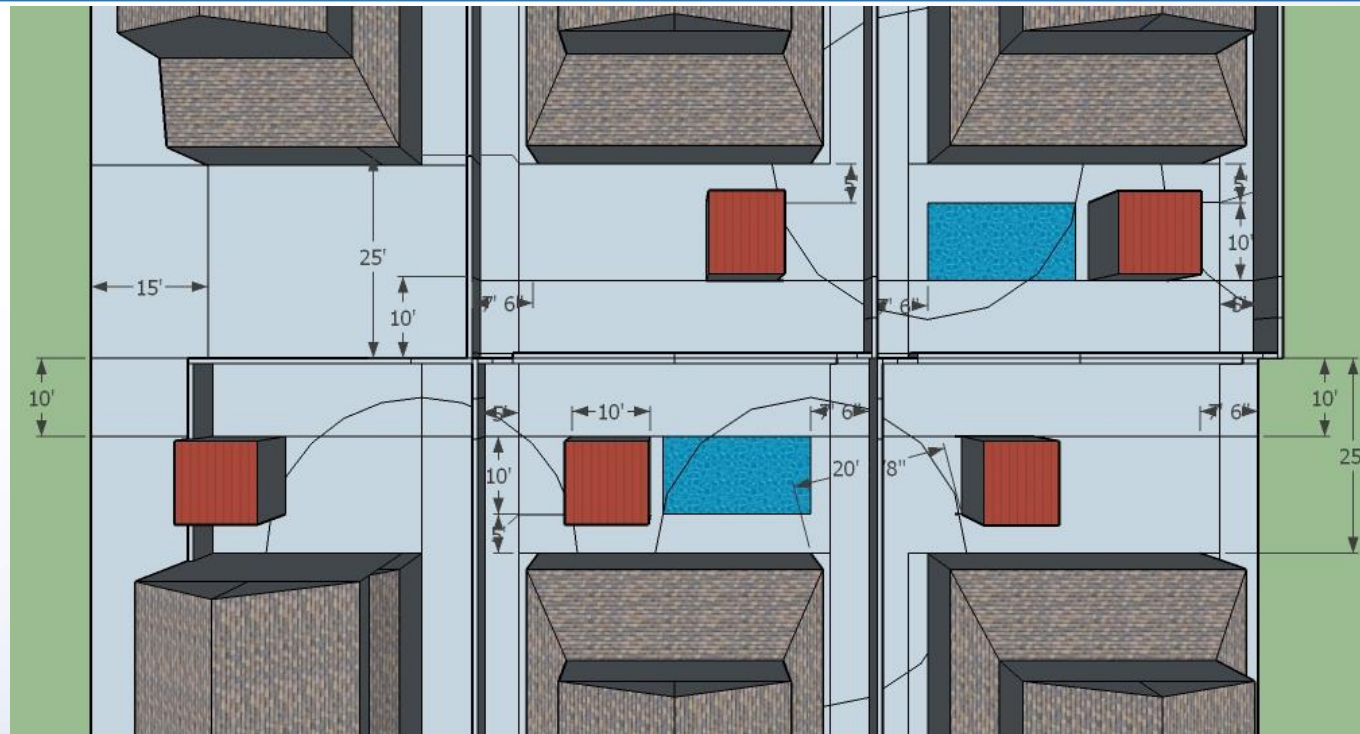


➤ Difference between ordinances

- Max. # of permits (Orlando-100, Maitland/Longwood-50)
- Maitland ord. includes language on follow up inspection, coop height, chicken feed storage and square footage per bird, disposal of deceased chickens
- Distance from neighboring res. structure (Orlando 20', Maitland/Longwood 25'), distance from property line (Orlando 5', Maitland 7.5'), max size of coop (Orlando 50 sqft, Maitland/Longwood 100sqft), max height



Possible Setback Scenarios Based on 50ft wide lots-plan view



Possible Setback Scenarios Based on 50ft wide lots-perspective

