

Backyard Chicken Pilot Program Ordinance



Backyard Chicken Pilot Program Ordinance



April 13, 2020 Commission Meeting

Sustainability Staff provided draft ordinance based on Orlando and Maitland Ordinances; Commission provided feedback (i.e., 50 permits, 6' height limit, 2 yr.pilot program, code compliant lots) and asked it be reviewed by KWPB&S, P&Z and be brought back to Commission

July 13, 2020 KWPB&S Board Meeting

Sustainability Staff provided updated draft ordinance based on Commission's discussion; Board recommended ordinance with amendments (i.e., access to food/water at all times, clarify waste materials must be composted or bagged and trashed; prohibited in front yards only; increased height limit to 7'); Board also discussed screening/fencing but agreed it should not be included as an amendment.

August 4, 2020 Planning & Zoning Board Meeting

Sustainability Staff provided updated draft ordinance based on KWPB&S Board meeting; Board recommended ordinance with amendments (i.e., prohibit in side and front yards; decrease # of permits to 25; require neighbor consent). During the August 18, 2020 KWPB&S Advisory Board meeting, several board members expressed strong concerns with the amendments recommended by the Planning and Zoning Board and the impacts they would have on the success of the program.

August 26, 2020 Commission Meeting

Sustainability Staff provided draft ordinance for first reading. Passed with amendments: Removing the neighbor consent/approval requirement and adding

Basics:

- 24-month Pilot Program
- Permit required (Building official)
- Requires Photos/Site Plan of Coop
- Follow-up Inspection
- 25 permit maximum
- Max 4 chickens per household
- Single Family Homes Only
- Prohibited in Front
- Allowed in Side Yards meeting specified criteria
- Max Height 7'
- Personal Use Only
- No slaughtering on premises
- Requires proof of UF/IFAS Class Completion

Reasons to keep urban backyard chickens



Why Chickens?

- Have a steady supply of fresh eggs
- Have the knowledge of where your eggs came from
- Keep a "peck"-uliar pet
- An "eggs"-cellent opportunity to help teach kids responsibility
- Produce a valuable manure for composting

Topics covered in the UF/IFAS Extension class:

- Chicken Nutrition
- Local Ordinance Requirements
- Biosecurity (Keeping you and your birds healthy)
- Egg Production
- Proper Coop Construction

Neighboring Programs



➤ Update from neighboring cities

- Orlando-75 permits issued (pilot 2012, ordinance 2016)
- Maitland-10 permits issued (2013, ordinance 2014)
- Longwood-0 permits (ordinance 2018)

➤ Similarities in ordinances

- Rear yard; \$50 permit fee; chicken-care class requirement; site plan approval; first-come, first served; max # of chicken: 4; single-family residences only; PROHIBITED: selling eggs/chickens, slaughtering on premises; roosters + other poultry/fowl

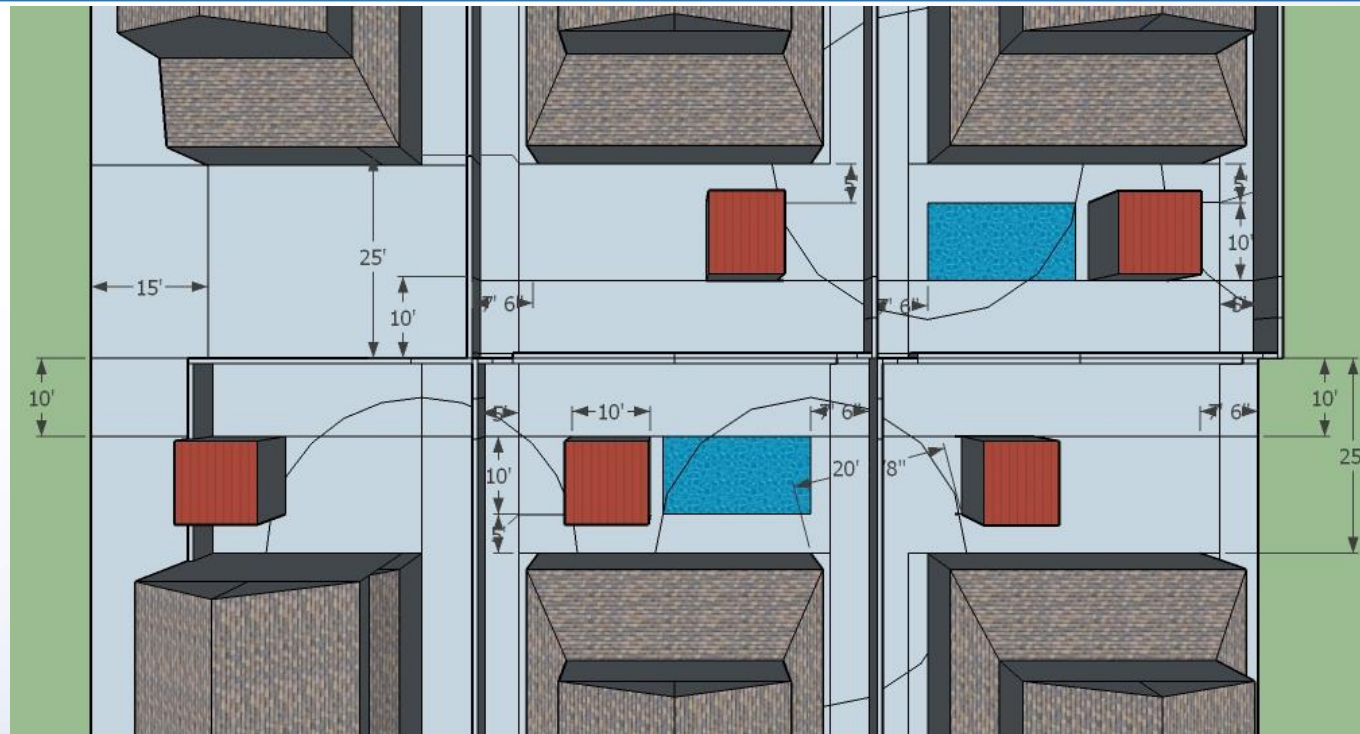


➤ Difference between ordinances

- Max. # of permits (Orlando-100, Maitland/Longwood-50)
- Maitland ord. includes language on follow up inspection, coop height, chicken feed storage and square footage per bird, disposal of deceased chickens
- Distance from neighboring res. structure (Orlando 20', Maitland/Longwood 25'), distance from property line (Orlando 5', Maitland 7.5'), max size of coop (Orlando 50 sqft, Maitland/Longwood 100sqft), max height



Possible Setback Scenarios Based on 50ft wide lots-plan view



Possible Setback Scenarios Based on 50ft wide lots-perspective

